

## 8

## WEAR PARTS / RECOMMENDED SPARE PARTS WEAR PARTS / LISTADO DE PARTES PIÈCES D'USURE / PIÈCES DE RECHANGE

When ordering please indicate part number /

Indique siempre en sus pedidos el N° de artículo y la cantidad requerida.

| KEY PART # | DESCRIPTION                       | QTY |
|------------|-----------------------------------|-----|
| 46 428773  | Tension wheel                     | 1   |
| 53 428775  | Tooth plate                       | 1   |
| 166 428843 | Knife                             | 1   |
| 222 428865 | Battery, 14 V / 2,6 AH Li-Ion     | 1   |
| 222 428866 | Battery, 14 V / 2,6 AH Li-Ion, US | 1   |

|  |                                       |   |
|--|---------------------------------------|---|
|  | Rueda tensora                         | 1 |
|  | Placa dentada                         | 1 |
|  | Cuchilla                              | 1 |
|  | Acumulador 14.4V / 2.6 AH Li-Ion      | 1 |
|  | Acumulador 14.4V / 2.6 AH Li-Ion, US1 | 1 |

## 8.1 PARTS LIST BXT2

## LISTADO DE PARTES BXT2

## LISTE DES PIÈCES

When ordering please indicate part number /

Indique siempre en sus pedidos el N° de artículo y la cantidad requerida.

| KEY PART # | DESCRIPTION                              | QTY                                       |
|------------|--|---|
| 1 428756   | Base plate compl., incl. pos. 2-6,13,131 | Amazon básico cpl., incl. pos. 2-6,13,131 |
| 2          |  |   |
| 3 428757   | Cylinder pin, Ø10x50                     | 1   |
| 4 428758   | Roll pin, Ø6x26 / BN 881                 | 1   |
| 5 428759   | Slide bearing, Ø10/12x10                 | 4   |
| 6 428760   | Slide bearing, Ø8/10x8                   | 1   |
| 7          |  |   |
| 9 428880   | Tooth plate bottom                       | 1   |
| 10 428881  | Set screw                                | 1   |
| 11         |  |   |
| 12 428761  | Bevel wheel with pinion, 15/32           | 1   |
| 13 428882  | Free-wheel needle bear., Ø10/14x22       | 1   |
| 14 428762  | Ball bearing, Ø15/28x7                   | 1   |
| 15 428763  | Spacer disk, Ø20/28x1                    | 1   |
| 16         |  |   |
| 17         |  |   |
| 18 428883  | Ball bearing, Ø35/47x7                   | 3   |
| 19 428764  | Blocking wheel                           | 1   |
| 20 428765  | Planetary wheel, 1st step                | 3   |
| 21         |  |   |
| 22         |  |   |
| 25 428884  | Planetary support complete               | 1   |

When ordering please indicate part number /

Indique siempre en sus pedidos el N° de artículo y la cantidad requerida.

| KEY PART # | DESCRIPTION                       | QTY                                |
|------------|-----------------------------------|------------------------------------|
| 26         |                                   |                                    |
| 27         |                                   |                                    |
| 28 428885  | Spacer, Ø12/24x0.5                | Arandela                           |
| 29 800327  | Pinhead screw M4x8                | Tornillo                           |
| 30 800328  | Spacer disk, Ø4/8x1               | Arandela                           |
| 31         |                                   |                                    |
| 32 428766  | Flange complete, incl. pos. 35,36 | Brida completo, incluye pos. 35,36 |
| 35 428767  | Slide bearing, Ø4/5,5x6           | Cojinete radial                    |
| 36 428768  | Needle bushing, Ø10/14x15         | Cañutero                           |
| 37         |                                   |                                    |
| 38         |                                   |                                    |
| 39 428769  | Spacer disk, Ø4/8x0.5             | Arandela                           |
| 40 428886  | Lock washer, Ø3.2                 | Arandela de cerradura              |
| 41 428887  | Cylinder screw, M4x12             | Tornillo cilíndrico                |
| 42 428770  | Strap guide 13mm                  | Guía del fijeje 13mm               |
| 43 428771  | Counter sunk screw, M4x6          | Torn. cabeza. perd.                |
| 44 428772  | Cam disk                          | Disco de leva                      |
| 45 428888  | Planetary wheel, 2st step         | Engrane planetario 2. Grado        |
| 46 428773  | Tension wheel                     | Rueda tensora                      |
| 47         |                                   |                                    |
| 48         |                                   |                                    |
| 50 428774  | Rocker complete, incl. pos. 5     | Balancín completo, incluye pos. 5  |

| <u>KEY</u> | <u>PART #</u> | <u>DESCRIPTION</u>       | <u>QTY</u> | <u>KEY</u> | <u>PART #</u> | <u>DESCRIPTION</u>           | <u>QTY</u> |
|------------|---------------|--------------------------|------------|------------|---------------|------------------------------|------------|
| 51         |               |                          |            | 96         | 428799        | Motor support complete       | 1          |
| 52         |               |                          |            | 97         |               | Ayuda del motor completo     | 1          |
| 53         | 428775        | Tooth plate              | 1          | 98         |               |                              |            |
| 54         | 428776        | Pan head screw           | 1          | 99         | 428800        | Counter sunk screw, M3x8     | 6          |
| 55         | 428777        | Strap stop, front 13mm   | 1          | 100        | 428801        | Spacer disk, Ø4/6x0.1        | 3          |
| 56         |               |                          |            | 101        | 428802        | Shoulder screw, M5           | 2          |
| 57         |               |                          |            | 102        | 428803        | Cylinder screw, M4x30        | 1          |
| 58         | 428778        | Pawl shaft               | 1          | 103        | 428804        | Cables tensioning            | 1          |
| 59         |               |                          |            | 104        | 428805        | Panhead screw, M2x10         | 1          |
| 60         | 428779        | Pawl wheel               | 1          | 105        |               |                              |            |
| 61         | 428944        | Washer, M4               | 1          | 106        |               |                              |            |
| 62         |               |                          |            | 108        | 428806        | Ball bearing, Ø30/37x4       | 1          |
| 64         | 428780        | Bolt                     | 1          | 109        | 428807        | Excentric cam                | 1          |
| 65         | 428781        | Blocking pawl            | 1          | 110        | 428808        | Planetary wheel, 3st step    | 3          |
| 66         | 428782        | Retaining ring, Ø8       | 2          | 111        | 428809        | Spacer disk, Ø12/24x0.2      | 3          |
| 67         |               |                          |            | 112        | 428810        | Carrier complete 2st step    | 1          |
| 68         |               |                          |            | 113        |               |                              |            |
| 70         | 428783        | Bolt                     | 1          | 114        |               |                              |            |
| 71         | 428784        | Spacer disk, Ø5/10x0.2   | 3          | 116        | 428811        | Planetary wheel, 2st step    | 6          |
| 72         | 428785        | Resetcam                 | 1          | 117        | 428812        | Spacer disk, Ø6/12x0.2       | 2          |
| 73         | 428786        | Set screw, M4x10         | 1          | 118        | 428813        | Carrier complete 1st step    | 1          |
| 74         | 428787        | Retaining ring, Ø4       | 6          | 119        |               |                              |            |
| 75         | 428788        | Support micro switch     | 1          | 120        | 428814        | Ring                         | 1          |
| 76         | 428890        | Panhead screw, M4x10     | 4          | 125        | 428815        | Cover motor support          | 1          |
| 77         | 428789        | Welding cables           | 1          | 127        | 428891        | Belt wheel complete          | 1          |
| 78         |               |                          |            | 128        |               |                              |            |
| 79         |               |                          |            | 129        |               |                              |            |
| 81         | 428790        | Compression spring       | 1          | 130        | 428816        | Starting disk                | 1          |
| 82         | 428791        | Ball, Ø8                 | 1          | 131        | 428817        | Ball bearing, Ø15/24x5       | 2          |
| 83         | 428792        | Compression spring       | 1          | 132        | 428818        | Bevel wheel complete         | 1          |
| 84         | 428793        | Ball, Ø9                 | 1          | 133        |               |                              |            |
| 85         | 428794        | Set screw, M12x10        | 1          | 134        |               |                              |            |
| 86         | 428795        | Set screw, M8x6 , Tuflok | 1          | 135        |               |                              |            |
| 87         |               |                          |            | 136        | 428820        | External retaining ring, Ø15 | 1          |
| 88         |               |                          |            | 137        |               | 138                          |            |
| 89         | 428796        | Rocker lever complete    | 1          | 140        | 428821        | Switching cam                | 1          |
| 90         | 428797        | Toothed lever            | 1          | 141        |               | Leva de la commutacion       | 1          |
| 91         |               |                          |            |            |               |                              |            |
| 92         |               |                          |            |            |               |                              |            |
| 95         | 428798        | Motor complete           | 1          |            |               |                              |            |
|            |               |                          |            |            |               |                              |            |

| KEY | PART # | DESCRIPTION                     | QTY | KEY | PART # | DESCRIPTION                              | QTY |
|-----|--------|---------------------------------|-----|-----|--------|--|-----|
| 142 | 428823 | Bolt                            | 1   | 188 |        |  |     |
| 143 | 428824 | Bolt                            | 1   | 189 | 428852 | Type plate, 10x45mm                      | 1   |
| 144 | 428825 | Bolt                            | 1   | 190 |        | Etiqueta                                 | 1   |
| 145 |        |                                 |     | 191 | 428895 | Motor cover complete                     | 1   |
| 146 | 428826 | Screwed shaft                   | 1   | 192 | 428853 | Name plate, 10x45mm                      | 1   |
| 147 | 428827 | Lower linkage                   | 1   | 193 |        | Envoltura del motor completo             | 1   |
| 148 | 428828 | Upper linkage                   | 1   | 194 |        | Etiqueta                                 | 1   |
| 149 | 428829 | Compression spring, Ø9.8x3x27.4 | 1   | 195 | 428941 | Cable tie                                | 1   |
| 150 |        |                                 |     | 196 | 428942 | Cable binder                             | 2   |
| 153 | 428830 | Swivel bearing                  | 1   | 197 | 428854 | PT-Screw, KA.35x20                       | 9   |
| 154 | 428831 | Ball bearing, Ø7/19x6           | 2   | 198 | 428855 | Printed circuit board                    | 1   |
| 155 | 428832 | Excetric shaft                  | 1   | 199 | 428856 | Protection cover pcb                     | 1   |
| 156 | 428833 | Spacer disk, Ø10.22x0.5         | 2   | 200 | 428857 | PT-Screw, KA.22x6                        | 2   |
| 157 | 428834 | Needle bearing, Ø10/17x12       | 1   | 201 | 428858 | Intermediate cable                       | 1   |
| 158 | 428835 | Welding shoe                    | 1   | 202 | 428859 | Signal cable                             | 1   |
| 159 | 428836 | Ball, Ø5                        | 4   | 203 | 428860 | Gasket, 40x21x16                         | 1   |
| 160 | 428837 | Supporting disk                 | 1   | 204 | 428861 | Protection plate                         | 1   |
| 161 | 428838 | Pinion                          | 1   | 205 | 428862 | Switch button                            | 1   |
| 162 | 428839 | Toothed belt, 158-2MGT-9        | 1   | 206 | 428863 | Compression spring, Ø5x0.6x14            | 1   |
| 163 | 428840 | Washer                          | 1   | 207 |        | Botón                                    | 1   |
| 164 | 428841 | Cylinder screw, M4x8            | 2   | 208 |        |  |     |
| 165 | 428842 | Bolt                            | 1   | 209 |        |  |     |
| 166 | 428843 | <b>Knife</b>                    | 1   | 212 | 428864 | Printed circuit board complete           | 1   |
| 167 | 428892 | Flanged bushing                 | 1   | 213 |        | Carta electrica completo                 | 1   |
| 168 | 428893 | Compression spring, Ø4.2x0.8x11 | 3   | 214 |        |  |     |
| 169 | 428844 | Compression spring, Ø4.1x0.8x24 | 1   | 215 | 428896 | Contact plate 14.4 V                     | 1   |
| 170 |        |                                 |     | 216 |        | Placa del contacto 14.4 V                | 1   |
| 172 | 428894 | Lever strap guide complete      | 1   | 217 |        |  |     |
| 175 | 428845 | Side cover                      | 1   | 222 | 428865 | <b>Battery 14.4V / 2.6 Ah Li-Ion</b>     | 1   |
| 176 | 428846 | Bearing bolt                    | 1   | 222 | 428866 | <b>Battery 14.4V / 2.6 Ah Li-Ion, US</b> | 1   |
| 177 | 428847 | Rear inner guide 16mm           | 1   | 223 |        | <b>Acumulador 14.4V, US</b>              | 1   |
| 178 | 428848 | Rear inner guide 13mm           | 1   | 224 | 428867 | Battery charger AL 1860CV-EU             | 1   |
| 179 |        |                                 |     | 224 | 428868 | Battery charger AL 1860CV-US             | 1   |
| 180 |        |                                 |     | 224 | 428869 | Battery charger AL 1860CV-JP             | 1   |
| 181 | 428849 | Strap guide rear 13mm           | 1   | 225 |        | Cargador rápido AL 1860CV-EU             | 1   |
| 182 | 428850 | Parthead screw, M4x6            | 1   | 226 |        | Cargador rápido AL 1860CV-US             | 1   |
| 183 | 428851 | Gear cover, Alu                 | 1   | 227 | 428870 | Wire brush / 21242                       | 1   |
| 184 |        |                                 |     | 228 | 428897 | Screw driver, crossifp                   | 1   |
| 186 | 428879 | Housing parts, black            | 1   | 229 | 428898 | Angle-wrench, hexagono                   | 1   |
|     |        |                                 |     |     |        | Cepillo metálico                         | 1   |
|     |        |                                 |     |     |        | Destornillador                           | 1   |
|     |        |                                 |     |     |        | Angulo-llave, hexágono                   | 1   |

| <u>KEY</u> | <u>PART #</u> | <u>DESCRIPTION</u>   | <u>QTY</u> |
|------------|---------------|--|------------|
| 230        |               |  |            |
| 231        |               |  |            |
| 232        |               |  |            |
| 233        |               |  |            |
| 234        | 428871        | <b>Option: protection plate-set</b> <b>Opcion: placa protectora</b>            |            |
| 235        |               |  |            |
| 236        | 428872        | Counter sunk screw, M4x6   | 5          |
| 237        |               | Tornillo   |            |
| 239        | 428873        | <b>Option: Protection cover</b> <b>Opcion: cubierta de la protección</b>       |            |
| 240        |               |  |            |
| 241        | 428899        | PT-Screw, KA 35x30   | 2          |
| 242        | 428900        | PT-Screw, KA 30x14   | 2          |
| 243        |               |  |            |
| 245        | 428901        | <b>Option: suspension bow-set</b> <b>Opcion: juego de gancho</b>               |            |
| 246        |               |  |            |
| 247        | 428874        | Cylinder screw, M4x20  | 3          |
| 248        | 428875        | Cylinder screw, M5x16  | 2          |
| 249        |               | Torn. cabeza. perd.  |            |
| 251        | 428876        | <b>Option: Strap guide set 9mm</b> <b>Opcion: Guia de fleje 9mm</b>            |            |
| 257        |               |  |            |
| 258        |               | <b>Option: Power supply connection</b> <b>Opcion: Conexión de alimentación</b> |            |
| 259        | 428877        | Mains Connector 230V EU  | 1          |
| 259        | 428878        | Mains Connector 115V US  | 1          |
| 260        |               | Conector de las cañerías 230V EU   |            |
|            |               | Conector de las cañerías 115V US   |            |

When ordering please indicate part number

Indique siempre en sus pedidos el N° de artículo y la cantidad requerida.

Lors d'une commande, veuillez indiquer le numéro d'article

**Bold = Recommended spare parts**

**Negrilla = Partes recomendadas**

**Gras = Pièces de rechange recommandée**

\* Loctite 222

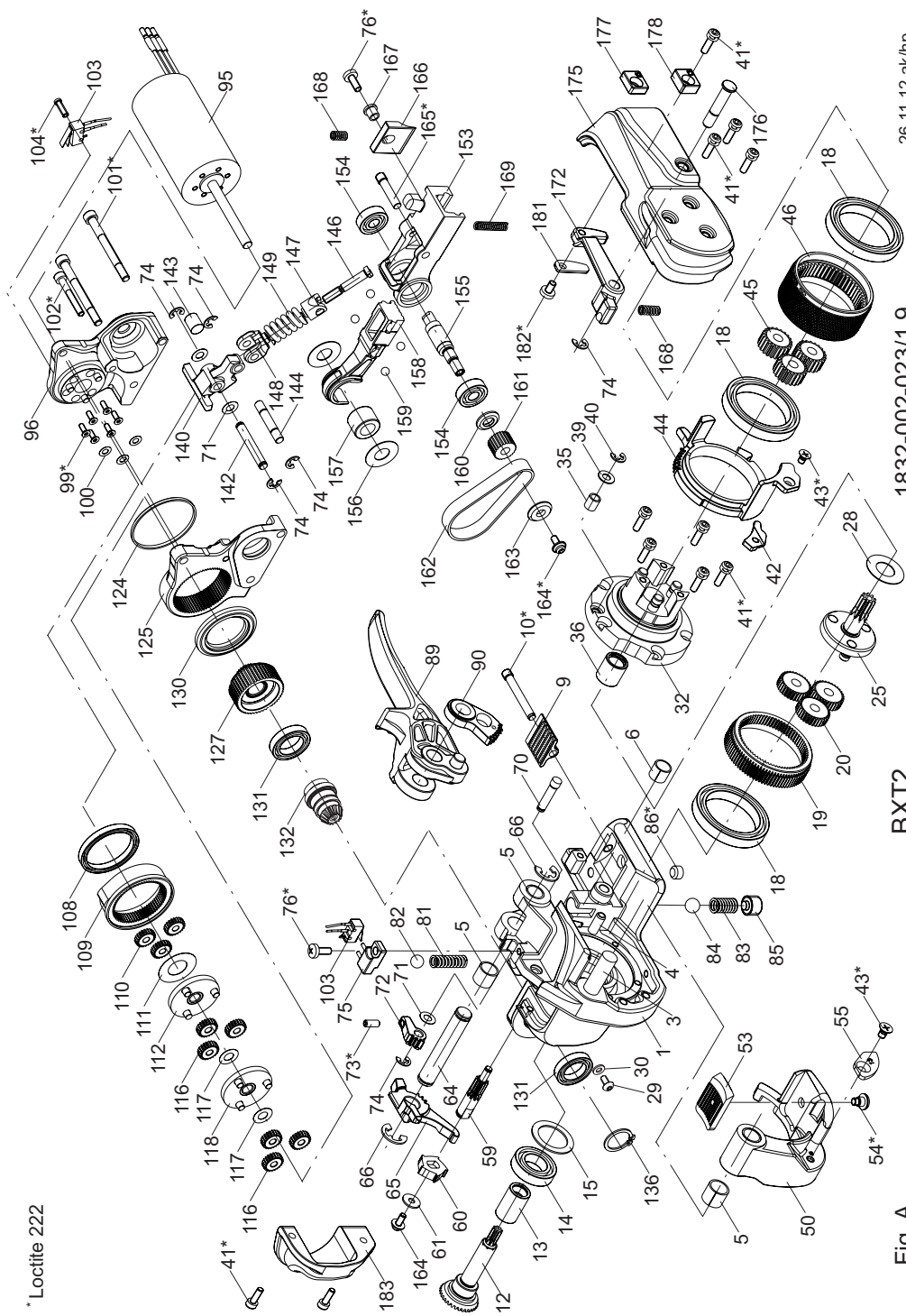


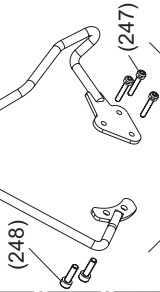
Fig. A

BXT2

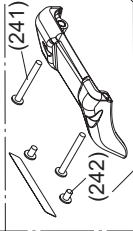
1832-002-023/1.9

26.11.12 ak/HP  
12.12

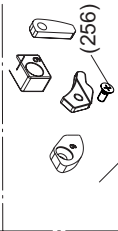
**Options**



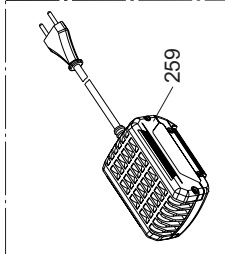
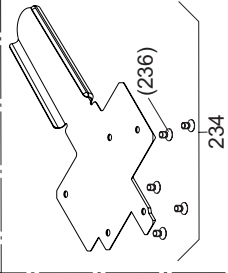
245



239



251



**WARNING**  
 Inspect all parts daily and replace them if they are worn or broken. Failure to do this can affect a product's operation and could result in serious personal injury.

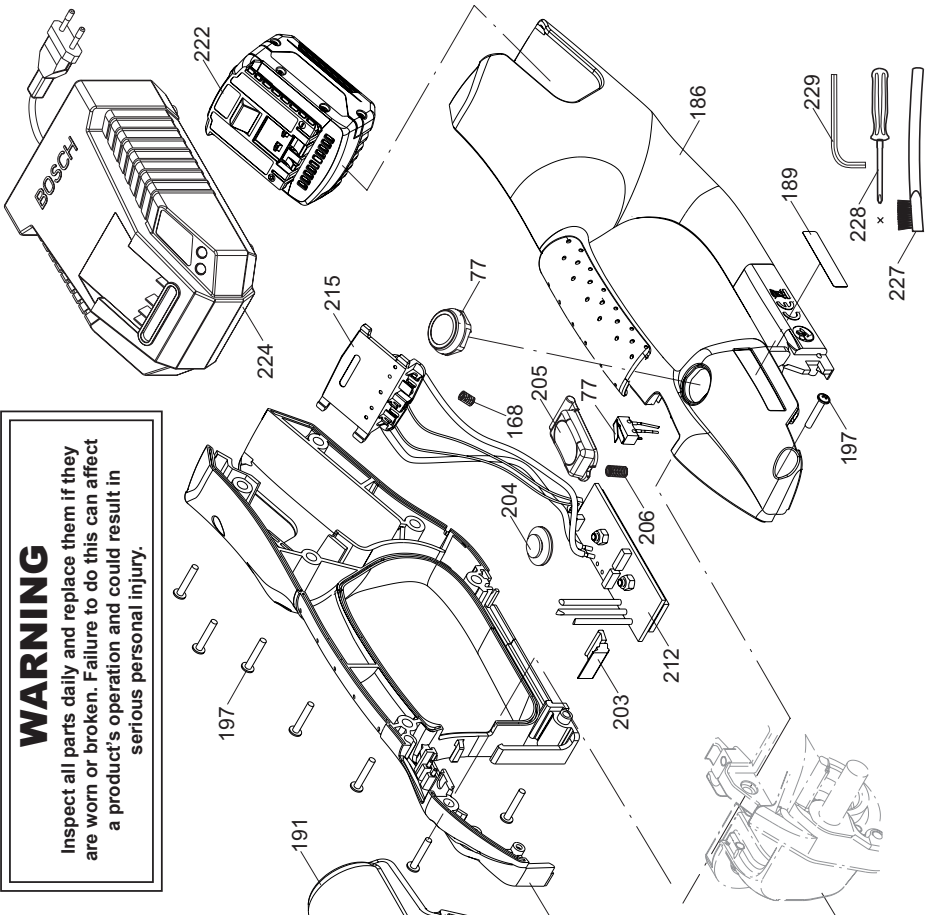
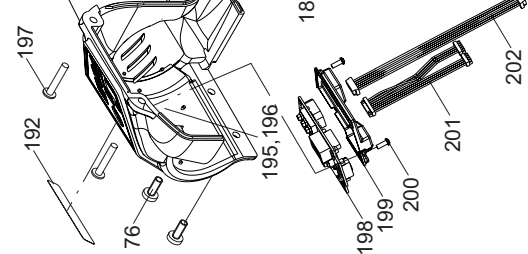


Fig. A/1

**Fig. B**

**BXT2**

1832-002-023/1.3

08.09.10 wr/hp